

► Put the ReFood Process in the right order

ReFood takes the food we put in the bin and turns it into electricity and fertiliser. This is the order reference:
please photocopy it and cut out the cards to give to the pupils - don't forget to shuffle them!



You put the food
you don't want in
the special bins



We collect
the waste food



The waste is sorted
into different kinds



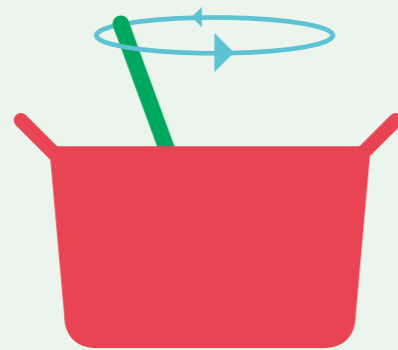
We heat the
food waste



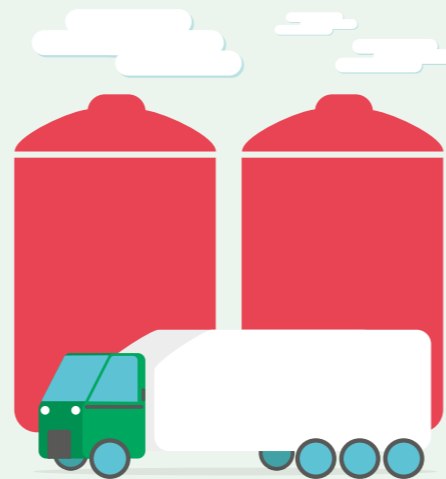
We pasteurise
everything



We cool it



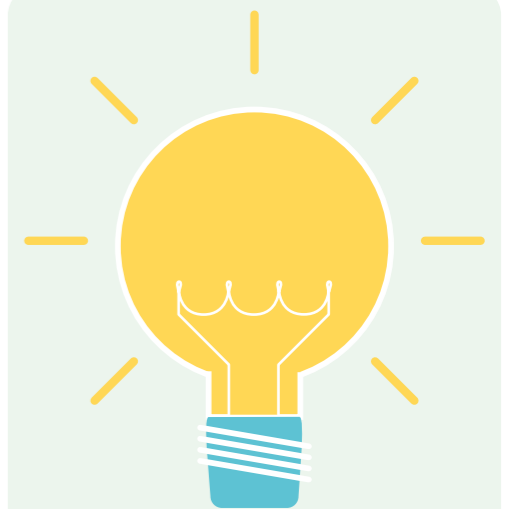
We mix everything
into a smooth liquid



We store it in digester
tanks, where it begins
to break down



Over time, the waste
gives off gas and we
collect it



We use special engines to
create the electricity we
need to power our homes